



2009 Female Sizing Form

2102 SW 2nd Street
Pompano, FL 33069
Nationwide: 800-413-5155
Local: 954-630-0900
Fax: 954-630-9225

Name _____ Date _____

Agency _____ Point Blank Rep. _____

Address _____ Person Measuring _____

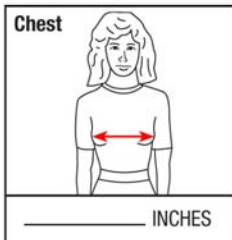
City _____

State _____ Zip _____

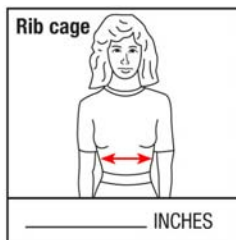
SIZING PROCEDURE: Measure and determine the size in the sequences shown below, then enter measurements in the provided boxes. For best results, take all measurements **while the officer is wearing her regular duty uniform and belt.**

STANDING MEASUREMENT SEQUENCE

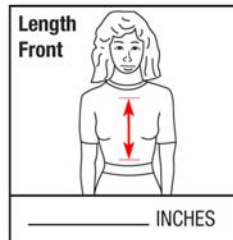
SITTING MEASUREMENT SEQUENCE



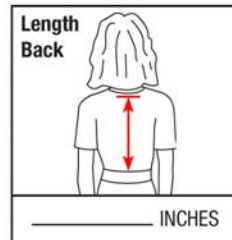
Measure under the arms, across the shoulder blades and around fullest part of the chest.



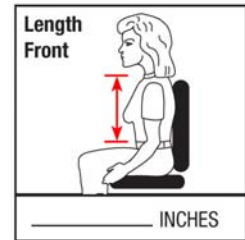
Measure around the back and across the stomach above the duty belt at the widest section of the abdomen.



Measure from the top of the sternum notch to the top of the duty belt.



Measure from the large bone at the base of the neck (center of back) to the top of the duty belt.



Measure from the top of the sternum notch to the top of the duty belt.

ADDITIONAL MEASUREMENT DETAILS

Chest Measurement (To be taken standing)

Ask the individual being measured to raise his/her arms to shoulder level. Place the beginning of the tape measure in the middle of the widest point of the chest. Continue around under the arms and across the shoulder blades until the tape measure meets the starting point, keeping the tape measure straight and snug, not tight. Ask the individual being measured to drop his/her arms to the sides. Record the chest measurement.

Waist Measurement (To be taken standing)

Place the beginning of the tape measure in the middle of the stomach at the navel. Continue around the back and side until the tape measure meets where you started, keeping the tape measure straight and snug, not tight. Record the waist measurement.

Front Length (To be taken standing)

Place the beginning of the tape measure at the notch in the clavicle. Continue down to the top of the duty belt, keeping the tape measure straight and snug, not tight. Record the length measurement.

ADDITIONAL INFORMATION

Height _____ Weight _____ Bra/Cup Size _____

Color _____ Vest Model _____

Accessories _____

Trauma Insert: Hard Soft STP

ThorShield: Yes No

Sizing Vest Used: Yes No

NOTES

MEASUREMENT SIZE CHART

Sizes	X-Small	Small	Medium	Large	X-Large	2X-Large	3X-Large
Chest	29-31	31-33	33-35	36-38	39-41	42-44	45-47
Waist	22-24	25-27	28-30	31-33	34-36	37-39	40-42

FOR POINT BLANK USE

Front Size/Length _____

Back Size/Length _____

IMPORTANT: Be certain of your correct measurements and size. Point Blank will NOT assume responsibility for incorrect sizing. Any alterations resulting from incorrect sizing will be subject to alteration charges. No returns or exchanges will be accepted 30 days after delivery.

FEMALE: QP-7200-3
REVISION: *8*
ISSUE DATE: 3-20-09
EFFECTIVE DATE: 4-1-09